



INDUSTRIAL DISPLAY PRODUCTS CATALOGUE



Welcome to SATHICORP !

Founded in 2016, our company has rapidly emerged as a leading provider of high-quality LED display solutions. Despite being a relatively new player in the industry, we have quickly built a strong reputation for delivering innovative and reliable products tailored to meet the diverse needs of our clients.

We offer an extensive array of LED display products designed specifically for industrial and corporate sectors. Our product lineup includes indoor and outdoor displays, digital signage, video walls, and customized display solutions that cater to various applications such as manufacturing monitoring, corporate presentations, and advertising.

While rooted in our founding principles, we have expanded our presence to serve a diverse clientele across various regions. Our LED display solutions have been instrumental in enhancing operational efficiency and visual communication for numerous esteemed organizations worldwide.

Industrial Reception Display

An Industrial Reception Display is a versatile digital screen designed for use in industrial environments, particularly at reception areas or lobbies. It serves as a dynamic communication tool, displaying real-time production data, company updates, and performance metrics, which can help in keeping visitors and employees informed about key operational achievements. Additionally, these displays can showcase promotional slides, corporate videos, or announcements, enhancing the visitor experience and reinforcing the company's brand image. With high brightness, durability, and customizable content options, these displays are ideal for creating a professional and engaging environment in industrial settings.

Specifications

Model :	ISF75-IV
Size :	W 5ft X 3.7 ft
Size diagonal :	75"
Display Type :	LED Visual Display
Features :	Local production data integration
Connectivity :	Ethernet, HDMI Support
Format :	Image, Video



Production Data Display

The "Industrial Production Data Display" is an advanced visualization tool designed to enhance industrial operations by providing real-time data display. This product integrates seamlessly with manufacturing systems, enabling the continuous monitoring of production metrics such as output rates, machine performance, and quality control statistics. By presenting this data on a large, easy-to-read LED screen, it allows for instant awareness of production efficiency, helping operators and managers make informed decisions quickly. This display is particularly valuable in environments where timely data access is critical to maintaining optimal production workflows.

Specifications

Model :	ISF75-IV
Size :	W 5ft X H 3.7 ft
Size diagonal :	75"
Display Type :	LED Visual Display
Format Support :	Image , Video
Connectivity :	Ethernet , HDMI Support
Usage :	Local Production Data integration



Environment Pollution Parameter Display

An "Environment Pollution Parameter Display" is a specialized digital signage system designed to monitor and display real-time data on environmental pollution levels. These displays typically showcase key parameters such as air quality index (AQI), particulate matter (PM_{2.5} and PM₁₀), carbon dioxide (CO₂) levels, and other pollutants like nitrogen dioxide (NO₂) and sulfur dioxide (SO₂). Positioned in public spaces, industrial zones, or near highways, these LED displays help raise awareness among the public and authorities about current pollution levels, enabling informed decision-making to mitigate environmental impacts and improve public health.



Alfa Laval India Private Limited
Heat Exchanger Factory
E-7/E-8, MIDC, Satara - 415 004



Specifications

Model :	SD47-U
Size :	W 6ft X 4 ft, W4ft X H6ft
Size diagonal :	86"
Display Type :	Real Time Data display
Color :	Multicolor support
Connectivity :	Online CPCB & MPCB
Format :	Data representation format as per MPCB/CPCB order annexure guidelines.
Multi-Language :	Hindi , English , Marathi & Other Indian Languages.

Safety Display

An Industrial Safety Display is a visual tool used in workplaces to communicate real-time safety metrics to employees and management. This display typically shows key safety indicators such as the number of days since the last accident, current safety score, compliance with safety protocols, and ongoing safety initiatives. By providing immediate, easily accessible information, it encourages a culture of safety, increases awareness, and motivates employees to adhere to safety standards, ultimately contributing to a safer work environment.



Specifications

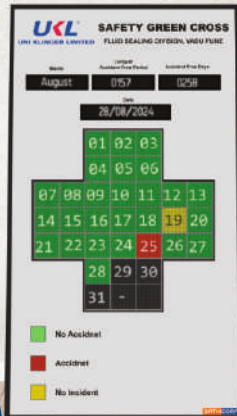
Model :	SD47-U
Size :	Available from 38" to 96"
Display Type :	LED Matrix Display Counter
Color :	Multicolor support
Connectivity :	LAN (Ethernet)

Safety Green Cross Display

The Safetycross LED Display is an advanced visual communication tool designed for industrial environments, enhancing workplace safety and operational efficiency. This display features a bright, energy-efficient LED screen that can be customized to show critical safety information, alerts, and real-time data such as production stats, incident reports, or emergency notifications. Its rugged design ensures durability in harsh industrial settings, while its clear and dynamic messaging capabilities help in

reducing accidents and ensuring compliance with safety standards.

The Safetycross LED Display is ideal for factories, warehouses, and other industrial sites where clear communication is essential.



Specifications

Model :	SGC79-I
Size :	W 90cm X 180cm
Size diagonal :	79"
Display Type :	LED Matrix Display Counter
Color :	Multicolor support
Connectivity :	LAN (Ethernet)

Factory Display

A Company Outdoor LED Display is a large, high-resolution screen designed for outdoor advertising and communication purposes. These displays are typically used by businesses to showcase dynamic content, such as promotional messages, branding, announcements, and other vital information to attract and engage passersby. Built to withstand various weather conditions, they feature bright, vivid colors that are visible even in direct sunlight, ensuring clear visibility at all times. These displays are an effective tool for enhancing a company's presence in public spaces, driving customer engagement, and increasing brand visibility.



Specifications

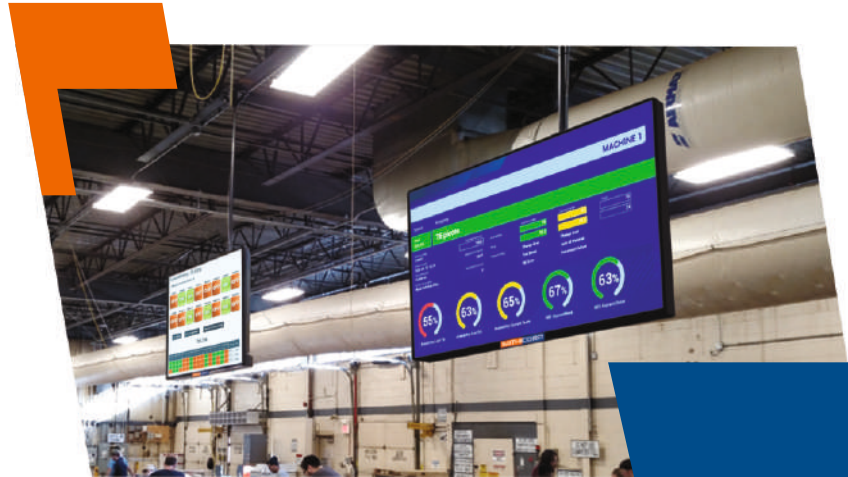
Model :	IFD136-OV
Size :	W 9.5ft X H 6.3 ft
Size diagonal :	128"
Display Type :	LED Visual Display
Format Support :	Image , Video
Connectivity :	HDMI Support
Features :	Ip65 & All Weatherproof

Shop Floor Display

A Company Indoor LED Display is a dynamic visual solution used to enhance communication and engagement within corporate environments. These displays are typically installed in lobbies, meeting rooms, or other strategic locations within a company's premises. They provide vibrant, high-resolution images and videos, making them ideal for showcasing company announcements, branding messages, real-time data, or other multimedia content. Indoor LED displays are energy-efficient, have a long lifespan, and can be customized in terms of size and resolution to fit the specific needs of the business, thereby improving the overall visual experience and contributing to a modern, tech-savvy workplace environment.

Specifications

Model :	ISF75-IV
Size :	W 5ft X H 3.7 ft
Size diagonal :	75"
Display Type :	LED Visual Display
Format Support :	Image , Video
Connectivity :	HDMI Support
Usage :	Local production data integration



Production Machine Display

A Production Machine Display is an advanced visual tool used in manufacturing environments to provide real-time data on the status and performance of production machinery. These displays typically show critical metrics such as production speed, output quantity, machine efficiency, downtime, and error alerts. By presenting this information in a clear and easily accessible format, displays help operators and supervisors monitor and optimize production processes, enhance operational efficiency, and quickly respond to any issues that may arise, ultimately contributing to improved productivity and reduced downtime.



Specifications

Size diagonal :	13"
Display Type :	Local Production Data integration
Format Support :	Image , Video
Connectivity :	Ethernet , HDMI, Wi-Fi

Truck Terminal Display

The Truck Terminal Display is a robust digital signage solution designed to streamline operations in truck terminals. This display provides real-time information on truck schedules, loading bay assignments, and cargo statuses, ensuring smooth coordination and reducing delays. Its large, high-visibility screen is ideal for outdoor environments, offering clear readability even in adverse weather conditions. By delivering up-to-date data to drivers, loaders, and terminal staff, the Truck Terminal LED Display enhances operational efficiency, reduces congestion, and helps maintain a well-organized, efficient workflow at busy logistics hubs.

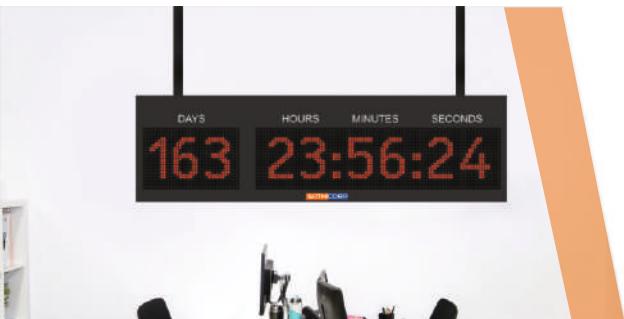
Specifications

Model :	ISF75-IV
Size :	W 5ft X H 3.7 ft
Size diagonal :	75"
Display Type :	LED Visual Display
Format Support :	Image , Video
Connectivity :	Ethernet , HDMI Support
Usage :	Local Production Data integration

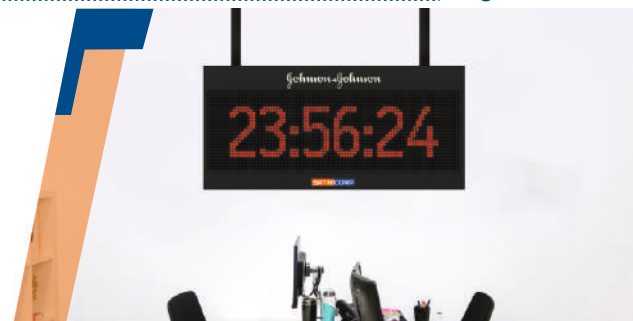


VMS, Counter & Digital Clock

Model : CK26-S (Single) & CK26-D ual
Size : W 2ft X 0.5 ft
Size diagonal : 26"
Display : Single & Dual Side
Display Type : LED Matrix Display Counter
Color : Multicolor support
Connectivity : LAN (Ethernet)



Model : SK60-S (Single) & SK60-D (dual)
Size : W 5ft X 1 ft
Size diagonal : 60"
Display : Single & Dual Side
Display Type : LED Matrix Display Counter
Color : Multicolor support
Connectivity : LAN (Ethernet)



Model : CK26-S (Single) & CK26-D
Size : W 2ft X 0.5 ft
Size diagonal : 26"
Display : Single & Dual Side
Display Type : LED Matrix Display Counter
Color : Multicolor support
Connectivity : LAN (Ethernet)



Food Waste Display

A Food Waste Display is an innovative tool designed to raise awareness and promote responsible food consumption. This display uses bright, energy-efficient LED technology to showcase real-time data on food waste in various settings, such as restaurants, cafeterias, or public spaces. The display can provide statistics on the amount of food being discarded, highlight the environmental and economic impacts of waste, and offer tips for reducing waste. By making food waste visible and measurable, these displays encourage more sustainable practices and foster a culture of mindfulness around food consumption.



Specifications

Model :	ID42-I
Size :	W 90cm X H 60cm
Size diagonal :	42"
Display Type :	LED Visual Display
Format Support :	Image , Video
Connectivity :	HDMI Support

Head Count Display

A Head Count Display is a crucial tool in manufacturing plants, designed to provide real-time visibility of personnel present on the premises. This display typically shows the total head count, which is the sum of employees, visitors, and contractors currently on-site. By breaking down the data, the display offers a clear view of the number of employees working, the count of visitors present, and the number of contractors engaged in various tasks. This system enhances safety, compliance, and operational efficiency by ensuring that the plant management is always aware of who is on-site at any given time, allowing for better resource allocation and emergency response planning.

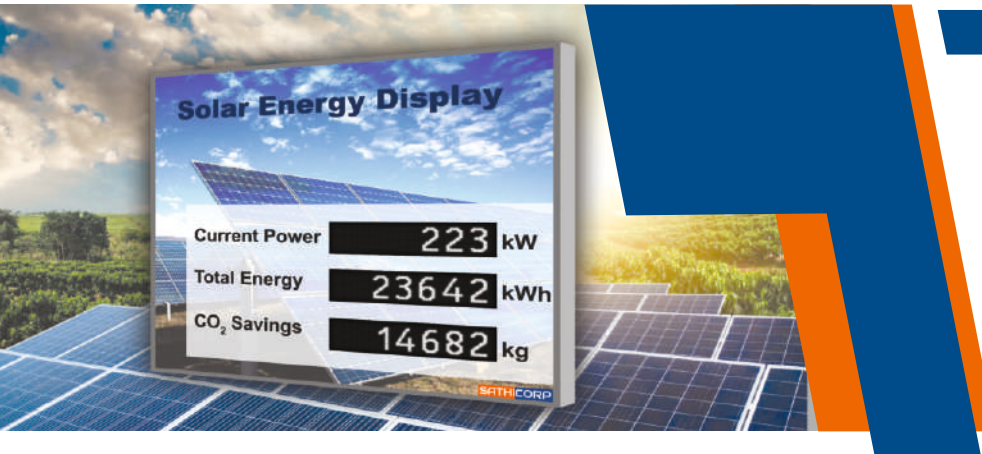


Specifications

Model :	IHC-47
Size :	W 3ft X 2.5ft
Size diagonal :	47"
Display Type :	LED Matrix Display Counter
Color :	Multicolor support
Connectivity :	LAN (Ethernet)

Solar Energy Display

A Solar Energy Display is an advanced visual tool designed to provide real-time data on solar energy systems. This display typically shows key metrics such as the total energy generated, which reflects the cumulative energy output over time, and the current power output, indicating the instantaneous energy production. It also highlights the CO₂ savings, showcasing the environmental impact by quantifying the reduction in carbon emissions due to the use of solar energy. By offering these insights in a clear and accessible format, the display promotes awareness of renewable energy benefits and encourages sustainable practices.



Specifications

Model :	SED-47
Size :	W 3ft X 2.5ft
Size diagonal :	47"
Display Type :	LED Matrix Display Counter
Color :	Multicolor support
Connectivity :	LAN (Ethernet)

PPE Matrix for Critical Activity Display

The Digital PPE (Personal Protective Equipment) Matrix is a cutting-edge tool designed to enhance safety management in critical industrial activities. This digital solution systematically maps the required PPE based on specific job tasks, risks, and environmental conditions, ensuring that workers are properly equipped before starting any high-risk activity. The matrix can be integrated with existing safety management systems, providing real-time updates, compliance tracking, and easy access to PPE requirements for different roles and scenarios. By automating the identification and monitoring of PPE needs, the Digital PPE Matrix helps reduce human error, improve compliance with safety regulations, and ultimately protect workers in hazardous environments.



Specifications

Model :	SD81-I
Size :	W 150cm X 150cm
Size diagonal :	81"
Display Type :	LED Matrix Display Counter
Color :	Multicolor support
Connectivity :	LAN (Ethernet)

Our Valuable Clients

At SATHICORP, we take pride in partnering with our valuable clients, offering tailored LED display services and Presentation solutions that drive their success and foster long-term growth. Your trust empowers us to deliver excellence in every project. We have over 100+ valuable clients globally.





SATHICORP INDIA PVT LTD is a one of India's leading Industrial display solution company. We have core specialized in industrial display solution and display software technologies from 2016.

With Expertise in Govt. Smart city , Industrial Projects. Professionally managed organization. We have regional offices in Pune, Mumbai , Chatrapati Sambhajanagar.



SATHICORP INDIA PVT LTD

Our Presence

Pune (HQ)

Survey No 1030/2, Near Sonai Restaurant,
Perne Phata, Perne Road, Pune-Nagar Hwy
Tal-Haveli, Dist-Pune, 412216. MH, IN.

Mumbai

310 Dalamal Chambers , Marine Lines,
Mumbai, 400020. MH. IN.

Chatrapati Sambhajanagar

Plot No : 14/15,
Industrial Estate, MIDC Walunj,
Chatrapati Sambhajanagar, 431136. MH. IN.



 +91 800 75 34 767

 sales@sathicorp.com

 www.sathicorp.com